

# CORNERSTONES

CARE  
PERSEVERANCE  
RESPECT  
RESPONSIBILITY



DRIFFIELD  
SCHOOL  
& SIXTH FORM

**BELIEVE · ACHIEVE**  
**ONE DRIFFIELD**

**SPRING 2026 - EDITION 3**

CARE  
PERSEVERANCE  
RESPECT  
RESPONSIBILITY

## **Personal Development at Driffield School & Sixth Form**

- To ensure students understand the benefits of looking after their mental and physical health
- To promote equality and diversity and respect difference
- To provide opportunities for students to access and remember for a lifetime
- To raise aspirations to achieve personal excellence.



## **In APEX this term...**

This term in APEX, KS3 students have continued their learning within Relationships and Sex Education (RSE). Several Year 9 classes benefited from a specialist workshop delivered by City Health Care Partnership (CHCP), which gave students the opportunity to engage in professional, open discussions around key RSE themes. Feedback from students was extremely positive, with the CHCP practitioner commenting:

"Your Year 9s are a credit to Driffield School and I really enjoyed today."

Due to the success of these sessions and the prolonged impact they have on learning, further Year 9 classes and KS4 students will now take part in the workshop to further broaden their understanding.

Following the completion of RSE, KS3 students will move on to the Risk & Safety strand of the APEX curriculum. During this unit, students will learn how to recognise potential dangers, make informed and responsible decisions, and manage challenging situations both online and in the wider world. Topics include online safety, consent, social media pressures, exploitation, substance misuse, crime, extremism, and personal safety, equipping students with the knowledge and confidence to keep themselves and others safe.

KS4 learners will now move on to the topic of Healthy Lifestyles, where they will explore how to minimise the risk of harmful behaviours and take responsibility for their own health and wellbeing. Students will examine issues such as alcohol and drug misuse, gambling and addiction, managing pressure linked to crime and online risks, and body image. They will also learn about illness prevention and screening, as well as the importance of blood, stem cell and organ donation, supporting them to make informed, healthy choices for the future.

Within the APEX curriculum, we continually strive to enrich learning through opportunities with external providers, enabling students to engage in real-world learning and professional conversations. In line with this approach, selected Year 7 classes will begin a six-week programme with Kingsmill Sixth Form at the start of February. This programme will allow Year 7 students to work with sixth-form students mentors and take part in workshops focused on understanding disabilities and participating in inclusive activities designed to promote empathy and awareness.

# CORNERSTONES ATTENDANCE SPECIAL



A key priority for us is ensuring that all students understand what good attendance looks like and why it matters so much. Attending school for at least 96% of the year is considered good attendance, and of course, being in school every day is even better.

Research consistently shows that students with strong attendance build more positive, long-lasting friendships, take part in a wider range of extracurricular opportunities, and develop the skills and confidence needed to thrive both in school and in later life. Good attendance also aligns closely with our Cornerstones of Perseverance and Responsibility.

Our school data, supported by national statistics, shows that students who attend 96% or more achieve up to two grades higher across their subjects than those whose attendance falls below 90%.

With 190 school days each year, a child who misses 19 days becomes persistently absent—equivalent to half a day of learning lost each week, four full weeks across the year, 95 hours of lesson time and 25 hours of social development. Over time, this can create significant gaps in knowledge and limit future choices.

## Why Every Day Counts

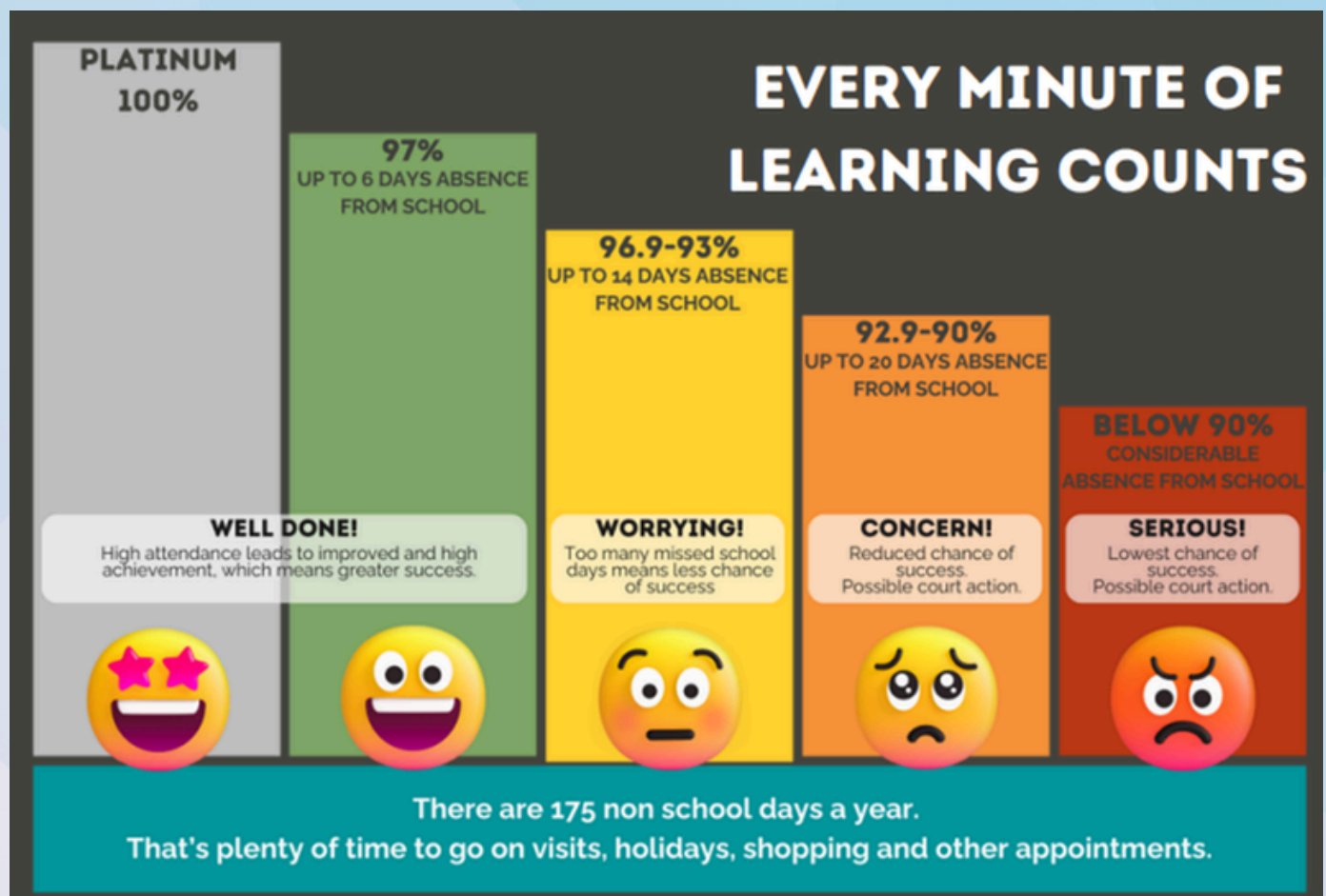
School isn't just about books and homework; it's about making memories, learning new skills and spending time with friends. Every day your child is here, they're building confidence and getting ready for the next step in their journey.



# CORNERSTONES ATTENDANCE SPECIAL



We fully recognise that illness is sometimes unavoidable and we support students to catch up when they return. However, since the pandemic we have seen more students staying off for low-level concerns that they may previously have managed in school. With your support, we want to rebuild resilience. Children who feel a little “under the weather” can often cope with a school day, especially with encouragement. If your child improves as the week goes on, please send them in—even one day makes a difference. Fridays are just as important as Mondays.



Ultimately, attending school every day helps students feel connected, successful and ready for the future. The more they are in school, the more they benefit socially, academically and personally. Strong attendance is one of the most powerful ways to support your child's long term success.

# CORNERSTONES ATTENDANCE SPECIAL



## REWARDING ATTENDANCE

We are committed to celebrating the students who show dedication, perseverance and responsibility through their excellent attendance and it's been fantastic to recognise so many already this year.

Students who achieved 100% attendance at the end of the autumn term have received special certificates and many more have been awarded certificates for meeting or exceeding our school attendance targets.

Each half term, students with strong attendance also enjoy queue-jump passes for the canteen, giving them a well-earned treat during busy lunchtimes.

Before Christmas, the form group in each year with the highest attendance enjoyed a cosy hot chocolate reward with their form tutor - a brilliant way to celebrate collective effort and teamwork!



## REWARDING ATTENDANCE

Throughout the last two weeks in January, we've introduced daily canteen voucher rewards, with three students in every year group winning a voucher each day. At the end of each of the two weeks, one student from each year group will also win a £10 voucher in our attendance prize draw.

There will be even more rewards and celebrations as the year continues, recognising both individual commitment and whole-group achievements as we work together to build strong attendance habits across the school.





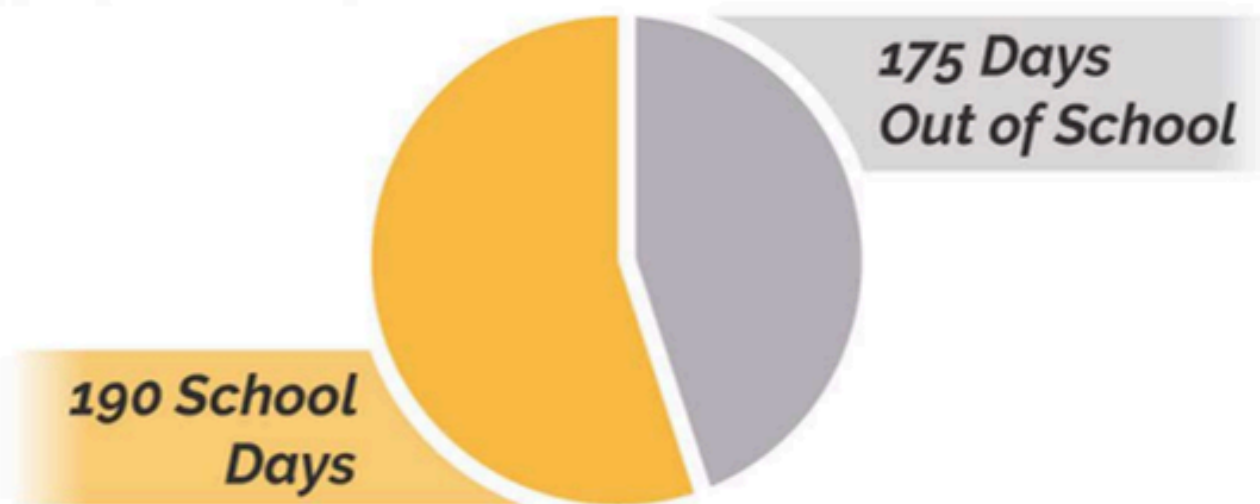
# CORNERSTONES ATTENDANCE SPECIAL



## Your Attendance and Punctuality

Attending school every day and being on time gives the **best chance of success**

**In One Year...**



### Medical Appointments

When possible, book them outside of school hours



### Illness

Unless it is serious, bring your child to school and we will keep an eye on them throughout the day



### Family Holidays

There are 175 days of the year when pupils aren't in school

### 95% Attendance

equates to a full 10 days of absence, or 50 lessons lost

### Being late 5 minutes each day

over a year adds up to 3 days lost

### 90% Attendance

or less has a serious impact on education and reduces life chances

# CORNERSTONES ATTENDANCE SPECIAL



## BUILDING GOOD ATTENDANCE HABITS

Parents and carers play a vital role in helping children build strong attendance habits and small, consistent routines make a big difference.

- Creating clear morning and bedtime routines helps students feel organised and ready for the day, while arranging medical or other appointments outside school hours reduces unnecessary absences.
- Reinforcing the value of arriving on time supports good learning habits and helps children settle calmly into their lessons.
- Modelling reliability—turning up on time for family commitments and showing consistency—helps children understand that attendance and punctuality matter in all areas of life.
- When an absence is unavoidable, parents can follow the school's reporting procedures and help their child catch up on any missed work.
- Keeping communication open with the school is another powerful tool; sharing concerns early allows staff to offer support before issues grow.
- If challenges such as transport difficulties or health concerns make attendance harder, families can also reach out for support, as schools often have resources or services available to help remove these barriers.

## ATTENDANCE RECORD

ne	Date	Time



# CORNERSTONES ATTENDANCE SPECIAL



## HOW DOES YOUR ATTENDANCE IMPACT YOUR FUTURE?

Data released by the UK Department for Education shows that the lower your attendance, the less likely you are to achieve in your GCSEs.

100%

**82%**

Achieved 5 GCSEs  
Grade 5+  
(inc. Maths and English)

Over 95%

**77%**

Achieved 5 GCSEs  
Grade 5+  
(inc. Maths and English)

92-93%

**53%**

Achieved 5 GCSEs  
Grade 5+  
(inc. Maths and English)

Below 90%

**43%**

Achieved 5 GCSEs  
Grade 5+  
(inc. Maths and English)

Research shows that for every 17 days you miss across your school career, your GCSE results go down by one whole grade!



Achieving 5 or more GCSEs at Grade 5+ has shown to increase your lifetime earnings by **41%**

There are  
**365** DAYS  
in a year

That gives you plenty of time for holidays, TV, shopping and video games.

**175**

are not spent  
in school!



# CORNERSTONES ATTENDANCE SPECIAL



## HOW SCHOOL STAFF SUPPORT ATTENDANCE

One of the key benefits of good attendance is that students are in school so that they can access support. Form Tutors, Heads of Year and Heads of House play a central role in promoting strong attendance by building consistent relationships with students and supporting with their daily engagement.

Form tutors act as the first point of contact, noticing patterns early, checking in with pupils and offering encouragement or guidance when attendance begins to change.

Heads of Year take a broader, strategic view, analysing trends, coordinating support and working closely with families and external services when needed.



Miss Parsons  
Head of Year 7



Mrs Kennedy  
Head of Year 8



Ms White  
Head of Year 9



Miss Blake  
Head of Year 10



Mrs Potter  
Head of Year 11

We also have the Heads of House who play a pivotal role in strengthening attendance by creating a sense of belonging, accountability and shared expectations across their house community. They monitor attendance patterns closely, identify concerns early and coordinate targeted support for students who may be struggling.

**Mr Jenkinson**

Head of Bronte



**Miss Wing**

Head of Holtby



**Miss Windmill**

Head of Johnson



**Mr McDonald**

Head of Mortimer



There are times when students require more specialist support with their attendance. Mr Johnson, Attendance Officer, and Miss Hickey, Attendance Improvement Officer, work to support students who need more specialist help by acting a bridge between school, families and external agencies. They look beyond the numbers to understand the underlying reasons for persistent absence, whether these relate to health, wellbeing, social circumstances, or other complex barriers. By maintaining regular communication, monitoring progress, and advocating for the student's needs, they help to create a structured, compassionate support pathway that enables vulnerable learners to re-engage with school and improve their attendance over time.



**Mr Johnson**

Attendance Officer

**Miss Hickey**

Attendance  
Improvement Officer



Further information about the team and their roles can be found on our attendance page on our website: [www.driffieldschool.net/attendance](http://www.driffieldschool.net/attendance)



# CORNERSTONES ATTENDANCE SPECIAL



## ABSENCE

Absence from school is sometimes unavoidable, but students are encouraged to attend as much as possible, reflecting our perseverance cornerstone and the importance of pushing through challenges when they can.

If a student does need to stay at home, parents and carers should report the absence to school as soon as reasonably possible, ideally before 8.30am, and continue to do so on each day the student is away.

NHS guidance on common illnesses and when children should attend school is available, a link for which is provided on our [website](#) for easy access.

For absences lasting more than three days, the school may request medical evidence so that the absence can be authorised appropriately.



## Reporting Absences

We understand that there are some occasions where students are unable to come into school, for example, when they are ill.

Parents or carers must notify the school of the reason for the absence on the first day of an unplanned absence by 8.30 am, or as soon as reasonably possible. If a student is off for more than one day, school should be notified on each day of absence.

If the school is not notified of the reason for absence then the absence may not be authorised.

Student absence can be reported in the following ways:

**App:** Arbor parent app

**Email:** [attendance@driffielschool.org.uk](mailto:attendance@driffielschool.org.uk)

**Telephone:** 01377 253631 (option 2)

Full details can be found on the attendance page on the [school website](#)

## MEDICAL AND DENTAL APPOINTMENTS

We also realise that it can be very difficult if you need to book a medical appointment for your child but we ask if an appointment cannot be made out of school hours, please can you ensure that your child only misses school for the time of the appointment. We would welcome students in school before or after the appointment as appropriate. We may sometimes ask for evidence of the appointment in order to authorise the absence from school.

# CORNERSTONES ATTENDANCE SPECIAL



## PUNCTUALITY

Punctuality means arriving on time, being prepared, and starting the day ready to learn. In school, it matters because those first few minutes of a lesson set the tone for everything that follows. Students who arrive on time settle more easily, hear key instructions, and feel part of the class from the start.

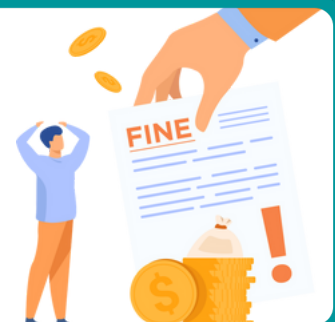


Good punctuality also builds habits that carry into later life—reliability, organisation, and respect for others' time. When students are consistently late, they miss learning, disrupt the flow of the lesson, and often feel less confident or connected. Strong punctuality helps create a calm, focused environment where everyone can make the most of their school day.

### Did you know...

Unauthorised absences can lead to the following:

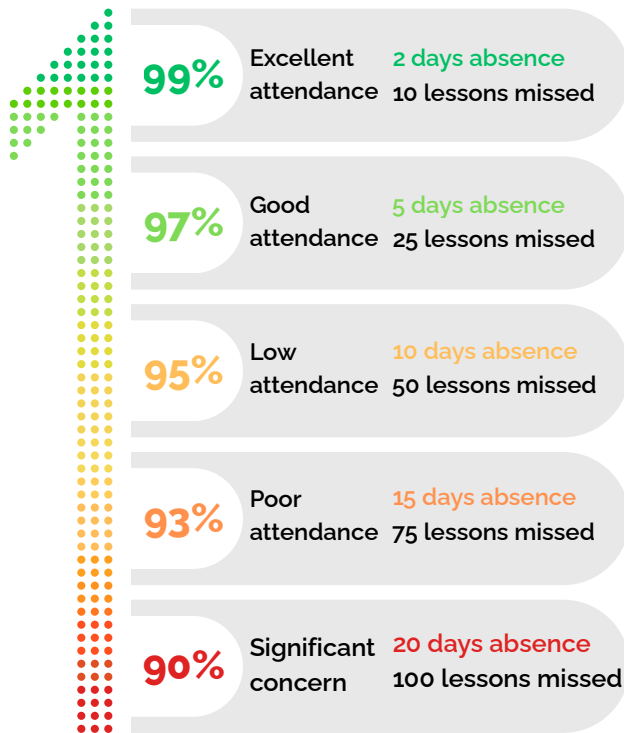
- A meeting with an Education Welfare Officer A
- fixed penalty notice can be issued - £60 per parent per child



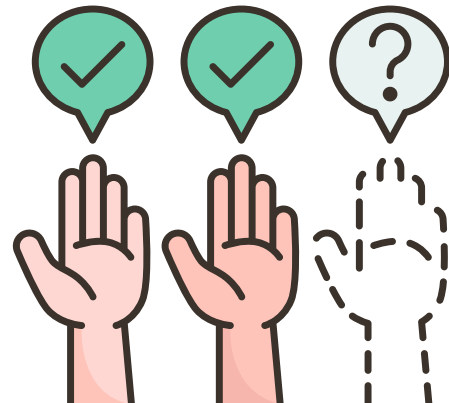
# CORNERSTONES ATTENDANCE SPECIAL



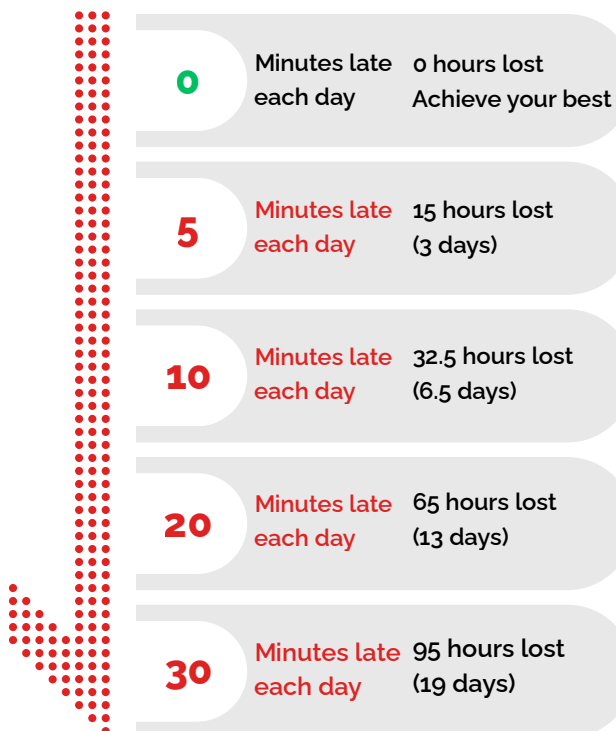
## EVERY DAY COUNTS



When you have periods of absence, this affects the amount of independent learning you will have to do in order to catch up with your peers. Having even one day off means missing five lessons, with potentially five different teachers across five different subjects.



## SUCCESS DEMANDS PUNCTUALITY



Lateness also contributes to missed contact time with your Tutor and teacher. Being on time sets you up for a purposeful start to the day and your lessons. Wherever possible, you should avoid being late so that you do not miss important activities and learning. These numbers are calculated across a whole school year.





# CORNERSTONES ATTENDANCE SPECIAL



## TERM TIME HOLIDAYS

It is very important to consider the impact on school attendance when considering taking a term time holiday. These absences are very unlikely to be authorised and may result in a Fixed Penalty Notice.

### Did you know...

Unauthorised absences can lead to the following:

- A meeting with an Education Welfare Officer A fixed penalty
- notice can be issued - £60 per parent per child



Exceptions? They're super rare, but if you believe your situation is exceptional, you'll need to complete and Absence from School for Exceptional Circumstances form. These are available on the school website and should be submitted as soon as possible for consideration.



# REWARDS

## LATEST REWARDS TOTALS

At Drifffield School, we place great importance on recognising the effort our students show each and every day. In every lesson, students are rewarded for the effort they put into their learning through the allocation of reward stamps. These stamps not only acknowledge their commitment in the classroom but also contribute towards their individual and house achievements.

Alongside lesson-based rewards, students can also receive additional recognition for consistently demonstrating our four Cornerstones: care, respect, responsibility and perseverance. By living out these values, students gain further opportunities to be celebrated for their positive contributions to school life.

All house points earned feed into the wider house competition, where totals are revealed at the end of the year. The winning house is celebrated with special recognition, ensuring that every student's daily effort plays a part in the collective success of their house.

ACHIEVEMENT  
POINTS

CORNERSTONES  
POINTS



249112

28986



212824

20484



232248

25721



197175

18414