



DRIFFIELD
SCHOOL
& SIXTH FORM

CORNERSTONES

CARE - PERSEVERANCE
RESPECT - RESPONSIBILITY

Personal Development at Driffield School

- To ensure students understand the benefits of looking after their mental and physical health
- To provide opportunities for students to access and remember for a lifetime
- To promote equality and diversity and respect difference
- To raise aspirations to achieve personal excellence



SPOTLIGHT ON...

MRS KENNEDY - HEAD OF YEAR 11

My name is Mrs Kennedy and I am the new Head of Year 11. I have only been at Driffield School for a few weeks and can already see what a good supportive friendly environment it is for both staff and pupils. I love working with young people and always try my best to provide support to them where I can, so they have a positive and nurturing experience of school. I believe if young people feel supported then they are more likely to go on and achieve their full potential.



I have a very varied background of experience which I believe helps me to support and encourage young people whatever their problems maybe.

I had a career in the prison service for a long time before I changed to working in mental health with MIND. I then moved to working in Early Help and Intervention where I worked with the whole family, helping them to find ways to deal with any new and emerging issues they may face.

I think this mix of experiences equips me to deal with the everyday duties that come with being a Head of Year and I look forward to my time here at Driffield School.





DRIFFIELD SCHOOL AND SIXTH FORM

NEWSLETTER

HALF TERM 2

What will pupils be studying in APEX this half term?

Year 7:

Finance and Careers

Students will learn about enterprise with a particular focus on the following areas: making money, budgeting, career paths and making decisions and how their decisions can have a longer term impact on their future prospects.

Year 8:

Finance and Careers

Students will learn about job expectations, what tax is and how to avoid debt as well as stereotypes within employment. They will explore their own skills as well as understanding the value of money and budgeting.

Year 9:

Finance and Careers

Students will learn about their potential next steps after school. Students will develop an understanding of various career paths by studying the local Labour Market Information, the importance of transferable skills, networking and relationships with others. They will also look at what it means to take out a mortgage and how to make great financial decisions.

Year 10:

How Does the Media Portray Religion

Students study how the media presents religion and analyse how this impacts prejudice and discrimination.

Year 11:

Is Death the End?

Students will explore one of life's most challenging and interesting questions: is death the end? They will explore different religious and non-religious beliefs about the afterlife, near death experiences and evidence of the paranormal.



Upcoming Events in APEX this half term

Last week we invited 'The Riot Act' team into school to deliver a Road Safety performance to Year 7 students. The show demonstrated the importance of not allowing mobile phones, as well as earphones, to distract you when walking near busy roads as well as coping with peer pressure and acting responsibly when in potentially unsafe situations. The performers ended with a workshop where the students identified the positive and negative behaviours seen. They looked at how these behaviours could cause serious harm when acting irresponsibly around roads. The students engaged extremely well and were commended for asking such great questions and getting involved.

This half term we are also welcoming a member of staff from the NHS to discuss their job role and the different opportunities available in the NHS. The session will give students the opportunity to see some specialist equipment used in within theatres as well as discussing the day to day life of a medical professional.

Throughout this half term several groups of Year 7 pupils have been over to visit the sixth form students at Kingsmill School. They have been exploring the classrooms and engaging with the students and the team. Over the next few weeks, the students will be visiting again and working with the staff at Kingsmill to learn about the routines and everyday life of their students. In the spring term, we will be engaging in activities with students from both schools. This opportunity is great and so far has been very rewarding for both schools and we look forward to working together even more in the future.

PASTORAL

KIDS

Kids is a national charity, founded in 1970, that provides a wide range of services to children and young people with SEND and their families throughout England

Kids is now offering wellbeing activity groups for young people aged 13-25. The weekly sessions are fun, free and full of activities to learn about wellbeing and mindfulness and offer the opportunity to try something new and meet new people.

For more information or to sign up, please use this link:

[Our groups – Young People's Hub from KIDS](#)



THE BIG AMBITION

Over the coming weeks, students have been asked by the Children's Commissioner for England to take part in [The Big Ambition](#). The Big Ambition aims to hear from children across England on what they think is important! In the lead up to the next General Election, the Children's Commissioner wants to take children's thoughts, opinions and ideas to decision-makers, to make sure that the Government hears young people's voices on what they think needs to be done to make children's lives better in England.



PASTORAL

STUDENT LEADERS UPDATE

The student leaders have had a busy start to the new half term, planning future events and being involved in activities in and out of school. In the first week back following the October half term break our new vice captains were nominated.

The new vice captains Bronte House are Fimber Jeacock and Andrew Walker, Holtby House are Louis Jarvis and Yasmin Artley, Johnson House are Lili Ratcliffe, Elle Hill, Poppy Phillips and Heidi Phillips (sharing the role), Mortimer House are Austin Woodcock and Ellen Crofts. I am very much looking forward to working with them and seeing what exciting ideas they will bring to the team.

On Monday 13th November four of our house captains were involved in the Humberside Violence Prevention Teams Hope Hack. The day brought together around 100 young people from the local area to discuss a range of topics that affect them, from the availability of sports, mental health awareness and support and safety in their local communities. The idea of the day was to allow young people to discuss what makes them feel safe, what facilities and events are on offer and what could further be done in their local communities to make them safer and more inclusive for all. The house captains represented the school in exemplary fashion and made many positive contributions to the discussions on the day. We are looking forward to seeing their ideas being implemented in local communities – improving the lives of young people.

On 11th December the House captain team will be travelling to our partner school South Hunsley to take part in the inaugural TEAL student leader conference. We are very much looking forward to this and bringing our ideas back to Drifffield School to help improve awareness around culture and diversity.

Also in December the charity committee will be visiting a local care home to spread some Christmas cheer. We will be taking some letters of kindness and singing the residents some festive songs. This was very well received last year and we are delighted to have been invited back this year.

In the next student leader meeting the group will be planning further events for when we return to school in January. These will include fundraisers, an environmental improvement project, sports challenges to take place in form times, and a project to help raise the awareness around maintaining positive mental well being. We will also be nominating some students to run in the East Riding Youth Parliament elections and hope to have another Drifffield student representing us at national level following the elections in January.

We are very proud of the group and all they continue to achieve.

ANTI-BULLYING

Driffield School has continued to demonstrate our commitment to anti-bullying work, and in November we joined schools up and down the country take part in the national anti-bullying week. This involved students and staff taking part in 'Odd Socks' Day, showing that it is OK to be different! Following this we have used content provided from our close partner, the Antibullying Alliance to provide form time activities linked to our anti-bullying work. This gave students an opportunity to provide feedback regarding their views and ideas on bullying. Listening to what students are telling us is a key part of the work we do and we look forward to responding to their comments in assemblies in the very near future.



During antibullying week, Students proudly displayed anti-bullying merchandise such as stickers, wristbands and rulers throughout the week. We also encouraged our whole school community to take 'The Driffield School Pledge' and have been delighted with the response from all areas. This pledge has been developed by our Peer Mentors and a poster featuring it has been signed by students and staff across the whole school and Sixth Form. Each Form group will display a copy in their form room and we are looking forward to collating every pledge poster and displaying them all together, showing over 1000 signatures all reinforcing our joint commitment to challenging bullying in any form if ever we encounter it.

If you have any comments or questions regarding our anti-bullying work in school, please do not hesitate to contact Mr Hunt via the school office.

ANTI-BULLYING



DRIFFIELD
SCHOOL
& SIXTH FORM

DRIFFIELD SCHOOL & SIXTH FORM

PLEDGE

2023/2024

We do not tolerate bullying at Driffield School and Sixth Form.

We work together to make sure that everyone here feels safe and happy.

We live our Cornerstones of Respect and Care every day, looking after each other and reporting anything that we see which we feel is not right.

We know that everyone should come to school feeling valued and secure in their identity.

By signing this pledge, we agree to uphold these values and we promise to challenge and report bullying in all forms whenever we see it.

PASTORAL

UK YOUTH PARLIAMENT

Open to 11-18 year olds that have been elected as Members of Youth Parliament by their communities, UK Youth Parliament provides opportunities for young people to bring about social change through meaningful representation and campaigning.

Part of the [British Youth Council's Youth Voice Programme](#).

Deadline for candidates to express interest is Wednesday 6th December.



DON'T FORGET YOUR WATER BOTTLES!



Just a quick reminder, as part of our commitment to sustainability we no longer sell items containing single use plastic in the canteens. This includes bottles of water. We have invested in water fountains to ensure students have easy access to places that they can fill up their own water containers. These are situated in the canteens for use at break and lunch and on West playground for use at other times. Please ensure your child brings a water container with them to fill up during the day.

CHARACTER EDUCATION

One of the key areas of priority this year has been to develop the importance of character within our students. On each Wednesday morning, a new character trait is defined with links to real life examples. Our character work runs alongside our cornerstones curriculum and we ensure that our students develop key values and virtues to live by. So far this year, we have focused on respect in line with remembrance day, courage and kindness to tie in with anti-bullying week and, most recently, commitment which links to our most recent TEALtalk from Jamie Peacock, ex Great Britain Rugby League captain.



PASTORAL

GOOD SCHOOL ATTENDANCE – EVERY DAY REALLY DOES COUNT!

As you may be aware, good school attendance is a hot topic in the media at the moment and this is for good reason. Evidence shows us that the highest rates of school attendance lead to the best outcomes across all key stages at school. Even missing a few lessons can mean that parts of the curriculum are missed and children may struggle to learn concepts built on what they have missed.

It is not just the academic opportunities that are missed. The whole school experience is extremely valuable for the development and wellbeing of children. Learning with peers, enjoying the amazing extracurricular offer available in school, forming relationships with adults beyond their families and making and maintaining friendships with their peers are all very important factors in building life skills and developing into an adult.

Therefore, it is vital that children are in school as much possible. Every day does really count.

Good school attendance is regarded as 95% or above. Attendance that falls below 90% is known as persistent absence and has a significant impact on the progress and achievement of students at all ages. The latest national data shows that nearly one quarter of all children in England are currently attending school for less than 90% of the time.

Students who are absent for 10% of the time miss 19 days at school, which is nearly 4 weeks, 95 lessons and 25 hours of social time. If a child is absent for 10% of the time, they miss 19 days at school, which is nearly 4 weeks, 95 lessons and 25 hours of social time.

If you have any concerns about your child's absence, please do not hesitate to contact your child's Head of Year in the first instance.



PASTORAL

TERM TIME HOLIDAYS AND EXCEPTIONAL ABSENCE REQUESTS

Whilst it is nice to have family time together, term time holidays do impact on student attendance in the same way as other absences. We follow the East Riding guidance, which can be found at the following link; [Holidays during term time and exceptional absence guidance](#). This guidance matches national guidance. Please be aware that it is very likely that requests made for holidays or exceptional absence are will not be authorised unless they meet very strict criteria, as follows:

1. Service personnel returning from a tour of duty abroad where it is evidenced the individual will not be in receipt of any leave in the near future that coincides with school holidays.
2. Where an absence from school is recommended by a health professional as part of a parent or child's rehabilitation from a medical or emotional issue.
3. The death or terminal illness of a person close to the family.
4. To attend a wedding or funeral of a person close to the family.
5. Where there are exceptional and unforeseen circumstances that fall outside of 1 to 4 above, the headteacher agrees to consult with the principal education welfare officer prior to any authorisation being given to the parent. The principal education welfare officer will discuss each case with an independent Headteacher and will make a recommendation to the referring school.

Please note: Evidence would be required in each case.

If a request meets the above exceptional circumstances but falls within the following times, the headteacher must be convinced that absence from school is the only option:

1. The first half-term of any academic year (applies to all pupils)
2. Year six transition day (for pupils in year six)
3. Year six SATs week (for pupils in year six)
4. Year nine options time (for pupils in year nine)
5. At any time during years 10 and 11 (for all pupils in these year groups)
6. At any time specified by the school (this will be communicated to parents by each school).

This academic year, 170 days were lost to term time holidays in the first six weeks of the new school year. The majority of these were from Year 11 students.

When making decisions about term time absence it is important to be aware that under the Antisocial Behaviour Act (2003) the local authority and school have statutory powers to tackle poor school attendance and/or unauthorised absences.

An unauthorised absence is where the headteacher has not given permission for the absence or where an explanation has not been provided by parents or carers. If your child accrues 10 sessions (5 days) of unauthorised absence you may be liable for a penalty notice.

Please be aware that if your request for an exceptional absence is declined, and you still take your child out of school, each adult in the household could be issued with a £60 penalty notice for each child that has been taken out of school.

PASTORAL

STUDENT VIEWS

It is always a pleasure to gather student views as part of our work to ensure we continue to address any concerns as part of our commitment to continuous school improvement. This term students have told us that for the most part they enjoy coming to school and enjoy lessons.

The changes to the Behaviour for Learning policy and introduction of our routines through the Cornerstones curriculum have supported our commitment to 'disruption free learning' and it is pleasing to note that this is unanimously recognised by students. Where disruption does occur, it is dealt with swiftly and the student is removed allowing other students to continue to learn in a settled, purposeful environment.

This was also recognised in a recent external review of the school, where the reviewer noted,

“ Students were attentive and responsive in lessons; they knew the rules and the routines expected of them (for example triple A listening) and responded to teacher interventions. This enabled staff to get on with teaching. Students were polite and courteous within lessons and throughout the course of the day; they are proud of their school, speaking highly of the opportunities that they are afforded and good relationships with staff was evident

”

PASTORAL

STUDENT VIEWS

Students are very grateful for the range of extracurricular opportunities offered to them and the uptake is impressive. Students tell us they feel safe in school and they know who to speak to if they have any problems. When asked what was best about the school, students gave a range of positive responses including:

YOU DON'T JUST LEARN
ALONE, YOU LEARN
WITH YOUR FRIENDS AS
WELL.

IT'S A
NICE
PLACE TO
HANG OUT
WITH
YOUR
FRIENDS

I LIKE THE
CHALLENGE IN
LESSONS

AN INTERESTING PLACE TO BE;
YOU LEARN A LOT ABOUT
PEOPLE AND ABOUT SUBJECTS

WHEN YOU TELL SLT WHAT
COULD BE IMPROVED THEY DO
SOMETHING ABOUT IT

OPPORTUNITIES TO
TRY STUFF I'VE
NEVER TRIED
BEFORE

IT'S ABOUT
BEING PART
OF SOMETHING
BIGGER

IT IS A VERY KIND
ENVIRONMENT

IT'S A SAFE
COMMUNITY

GOOD RANGE OF
EXTRA-
CURRICULAR
ACTIVITIES TO
GET INVOLVED IN

PASTORAL



BE WELL

We continue to benefit from the TEAL Be Well programme and have been extremely fortunate to be awarded further funding to enable this unique programme to run for a further 3 years.

In the summer term 2023, Mind supported 166 students through the following interventions;

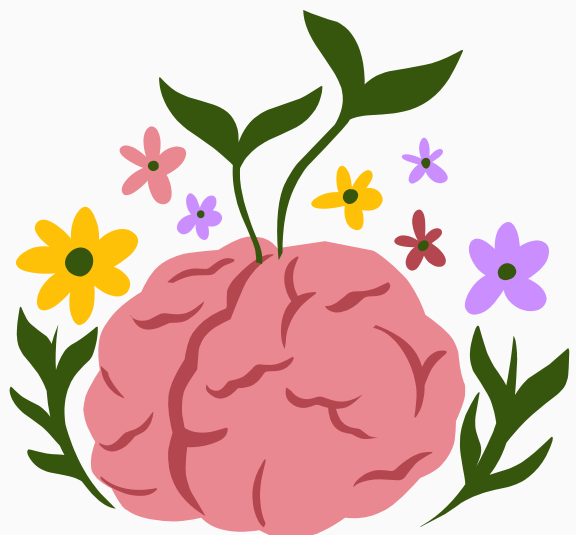
- 106 students experienced one of the Mind workshops
- 43 received individual support through drop ins
- 16 took part in a five week course building pupil resilience
- 1 student received intensive support through a provision called 'Big Umbrella'

84% of students receiving support reported that their mental health had improved following their intervention. 99% of students said they would recommend the support they had received from HEY Mind. 96% of students reported that they felt more confident in looking after their own mental health and wellbeing after attending a workshop and 96% of these students felt their knowledge level had improved.

We are delighted to offer our new Year 7 students the opportunity to take part in the one hour workshop on Transition and Self Care. This workshop focuses not only on the transition to secondary school but also discusses other times of change during a lifetime, and how this can affect us. Students work in groups to find ways that we can look after ourselves during times of change, and the five ways to wellbeing is introduced. Each Year 7 class will experience this workshop in the next few weeks.

The Mind programme also supported 14 parents during the summer term through the workshop 'How to have a conversation about mental health' or through parents' evening appointments. During the parents evening a number of parents commented that their child had attended the pupil resilience course and it had improved their confidence and helped with building peer relationships.

If you would like to know more about the programme, please contact your Head of Year in the first instance. If you would like to explore what support is available for parents, please contact our practitioner, Sally Mulligan, directly at smulligan@heymin.org.uk.



TRIPS & VISITS

YEAR 11 GEOGRAPHY FIELDWORK

Our Year 11 Geography students battled through the wind and the rain earlier this term and completed a day of Human Fieldwork in York. Even with the grim weather the students did a fantastic job completing a range of fieldwork methods and we managed to enjoy the sights of the city.

The trip to York allowed students to investigate how the function of an urban area changes with distance from the central business district. Students conducted land use surveys and environmental quality surveys at various locations within the inner city and city centre.

Once back in the classroom students have been busy presenting their findings and drawing conclusions on what they have discovered. This will all feed into their summer exams next year.

The geography department would like to say a big well done on how fantastic the students were on the trips. They were an absolute credit to the school.

ENGLISH AND GEOGRAPHY YEAR 8 FLAMBOROUGH TRIP

The English and Geography department have teamed up once again this year to provide Year 8 students with the opportunity to visit Flamborough Head. Flamborough is a Site of Specific Scientific Interest (SSSI) which has provided an on the doorstep classroom for students to experience the natural beauty of the east Yorkshire coast.

In English lessons students have been studying the novel 'The Prince of Mist'. This enigmatic text uses the coastal setting to delve into the dark and threatening world of Dr Cain (also known as the Prince of Mist). During the trip, students used their creative writing skills to capture the lure of the sea and the majestic presence of the cliffs as presented in the novel.

In Geography, students study a topic called 'Threats to our Oceans' in which they look at how local areas are at risk from sea level rise due to climate change. The trip helps broaden the students' knowledge of our local area and how this environment is constantly changing. The trip also feeds really well into future topics which students look at within Geography particularly at GCSE.



SCHOOL SITE

PREMISES UPDATE

As a school we strongly believe that the school and classroom environments have a significant effect on students' learning and attitudes. Over the last several years we have invested heavily into our school site and have continued this work to develop the learning environments that students are in and make it an improved place for our students.



In order to enhance the learning environment for students, we have been working through a programme of classroom redecorations. Following the redecorating that has taken place across most buildings in the school, we have most recently redecorated classrooms in English and languages.

Across the site we have upgraded all of our lighting, converting to LED. This is helping to reduce our energy usage and also makes spaces across the school site brighter. Across the site, we have added to our existing inspiration walls with additions to many spaces making the spaces brighter and more appealing.



Improvements have not been limited to classrooms and communal areas. We have begun improving our PE and sporting areas. Decoration works have taken place in the changing rooms in both the West and North Buildings. The gyms have been redecorated in the West and North Buildings as well as renewing the gym floors.

SCHOOL SITE

PREMISES UPDATE

Outside of the classrooms we are also developing our outdoor spaces. Where we have added outdoor seating, we have we have begun to develop these areas further by adding plants, shrubs and trees. One external area that has seen significant improvements has been in the Sixth Form centre, where we have created a bespoke outdoor space for our Sixth Form students.



Our biggest development project is currently being undertaken in the West Building where the existing single-glazed windows and doors are being replaced. This will create a more conformable learning environment for students and teachers, increase the energy efficiency of the building, as well as develop a more modern look to the building. Once these windows have been installed, our re-decoration works will continue in the West Building.

This year we have also entered a new waste contract, where all canteen areas now have new recycling and compostable waste bins. This will enable us to more appropriately sort and dispose of our waste as part of our commitment to improved sustainability.

Over the last year we have also been very fortunate to have access to government grants to further improve the energy efficiency of our site. We have been able to use this funding to make improvements to our boilers and heating systems, which has not only made our energy usage more efficient, but has also made our classrooms more comfortable environments.

The Wolds Illuminated Truck & Tractor Run

IN ASSOCIATION WITH, GOLDEN HILL FARM & BANTON YFC

SATURDAY 16TH DECEMBER 2023

The Truck & Tractor Run will pass through Driffield High Street, at approx 17:30 then onto (in order) Nafferton, Wansford, Riverhead, Skerne, Hutton Cranswick, Southburn, Neswick, Bainton, Tibthorpe Freshlands Farm Junction, Wetwang, Garton On The Wolds, and will end at York Road Roundabout

Come and watch as the trucks and tractors pass by, illuminated by festive lights, decorations and beeping horns and give a wave to Father Christmas as he passes by on his sleigh.

Raising money for 2 important Charities: Blood Cancer UK & Elsie's Appeal, bucket collections will be taken on the evening.



REVERSE ADVENT CALENDAR

DRIFFIELD
SCHOOL
& SIXTH FORM

Christmas should be a special time of year – but for many of the families we work with, Christmas can be extremely difficult. Our Reverse Advent Calendar is a way for us to collect food and special items for our families living in poverty around Drifffield and the Wolds. There are a mix of practical items and treats.



<p>MON 27TH NOV</p>  <p>Pasta and Pasta Sauces</p>	<p>TUES 28TH NOV</p>  <p>Fruit Juice</p>	<p>WEDS 29th NOV</p>  <p>Cereal</p>	<p>THURS 30TH NOV</p>  <p>Wrapped Biscuits</p>	<p>FRI 1ST DEC</p>  <p>Canned Food</p>
<p>MON 4TH DEC</p>  <p>Christmas Cake/Puds/ Mince Pies / Crackers</p>	<p>TUES 5TH DEC</p>  <p>Rice</p>	<p>WEDS 6TH DEC</p>  <p>Jam/Honey</p>	<p>THURS 7TH DEC</p>  <p>Cleaning Products and Toilet Roll</p>	<p>FRI 8TH DEC</p>  <p>Pasta and Pasta Sauces</p>
<p>MON 11TH DEC</p>  <p>Hats/Gloves/Scarves</p>	<p>TUES 12TH DEC</p>  <p>Tea/Coffee/Squash</p>	<p>WEDS 13TH DEC</p>  <p>Toiletries</p>	<p>THURS 14TH DEC</p>  <p>Crisps</p>	<p>FRI 15TH DEC</p>  <p>Sweets & Chocolate</p>
<p>MON 18TH DEC</p>  <p>Christmas Cake/Puds/ Mince Pies</p>	<p>TUES 19TH DEC</p>  <p>Canned Food</p>	<p>WEDS 20TH DEC</p>  <p>Baby Productss</p>	<p>THURS 21ST DEC</p>  <p>Long Life Milk</p>	<p>ANYTIME</p>  <p>Old Toys</p>

You can start your reverse advent calendar at any time. Please drop in any items to ACE reception.

We will drop off all your donations to the Drifffield and Wolds Food Bank.

Thank you so much for your support.

Drifffield and Wolds Food Bank The Exchange Sale Room
Rear of 52/53 Market Place
Drifffield



Multi-Activity Xmas Camps

Including | Get Glowing | Dodgeball | Ten-Pin Bowling | Boccia | Indoor Inflatables.... and many more fun Xmas games and activities.

Inclusive activities, disabilities sports and fun games aimed at children and young people with special educational needs and disabilities.

Sessions are for children and young people aged 5 - 16 years who attend an East Riding school and are in receipt of benefits related free school meals.

There are a small number of places available to children and young people with an EHCP (education, health and care plan).

Sessions will start at 9:00am and finish at 4:00pm. You are also able to register your child for half a day if this is more suitable. Lunch will be provided each day.

Parents, carers and personal assistants are welcome to attend.

Thursday 28th December	Friday 29th December	Wednesday 3rd January	Thursday 4th January
Beverley Leisure Centre, HU17 0LT	Beverley Leisure Centre, HU17 0LT	South Cave Leisure Centre, HU15 2EP	Driffield School Sports Hall, YO25 5HR

For more information or to book a place please scan the QR code, visit www.abilite.uk/christmas-camps or contact us on



info@abilite.uk



07813131561



@AbiliteLtd



abilite



— Friends of Driffield School —

CHRISTMAS BINGO

—

Thursday 14th December 2023

Driffield School (West Hall)

Eyes Down 7.30 pm prompt



**Admission £6
(10 games and 2 flyers)**

Refreshments and Raffle

**All proceeds to
Friends of Driffield School**